



WebUI

Responsive HTML5 UI

Apptec **WebUI** is a User Interface (UI) for Set Top Boxes (STB), Smart TVs and PCs, fully developed for use with Apptec Middleware®, using HTML5, JavaScript and CSS3.

WebUI implements all functionalities that are required on an IPTV/OTT network, including features that are normally found only in OTT products, such as, support for VOD. **WebUI** comes with the following features:

- ✓ Fully HTML5, Java Script and CSS3
- ✓ Navigable with Pointing Devices or Remote Controller (RC). For the later all that is required is a RC with the arrow keys, OK and BACK buttons
- ✓ Customizable Skins (Color themes)
- ✓ User Access Control
- ✓ Profile (subaccounts) management
- ✓ Parental Control
- ✓ Two formats of EPG, horizontal and vertical
- ✓ Mini EPG, allowing navigation on channels and programs
- ✓ Menu Bar for quick access to existent functionalities
- ✓ Multiple Reminders
- ✓ Favorites
- ✓ Support for local disk recordings
 - PVR
 - Time Shift (PLTV)
- ✓ Support for remote recordings
 - Catchup TV
 - PVR
 - Time Shift (PLTV)
- ✓ Audio track and subtitle selection
- ✓ Search programs by title
- ✓ Channel Zapping and Jump
- ✓ On-the-fly selection of Skin and Language
- ✓ Support for VOD (to be announced)

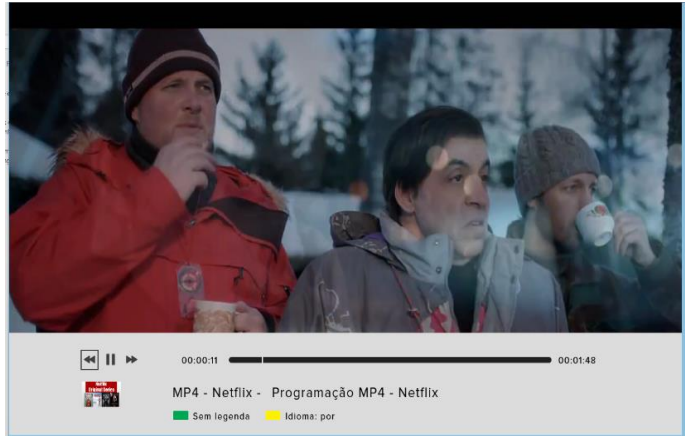


➤ PVR

Your customers will be able to record their favorite shows, movies, series etc. Programs can be recorded locally, if a local media is present or remotely if operator has nDVR services enabled. All the recording management is done on **WebUI** in an intuitive and seamless interface.

➤ Time Shift (PLTV) & Catchup

If the STB has support to record the video stream locally, or if the ecosystem has a network DVR (nDVR), **WebUI** will make use of it, allowing the user to pause, rewind and forward within the time window of the current program (Time Shift), or to watch the programs that are configured to be recorded by the operator, during the time window defined for such recordings (Catchup).



EPG format, which can be horizontal (shown in the picture) or vertical.

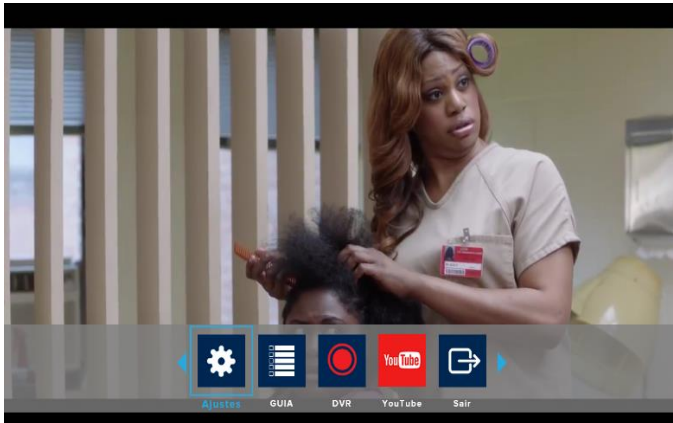
➤ EPG and Metadata

WebUI will fetch the schedule table, program data from the middleware, and present it in a format that is both intuitive and easy to use. While in the EPG page, the user can easily schedule reminders and recordings, by simply pressing a key in the remote controller. The user can select the

➤ User profiles and Parental Control

Any account can have multiples subaccounts, known as profiles. Each profile have three attributes: an Avatar, chosen from a set of images, age and a nickname. Based on the age of the current selected profile, **WebUI** will control the view of the program, block programs rated as improper for the current profile and request the password to unlock its view. Every operation on profiles with age higher than the current selected profile, requires a password be entered in order to be granted



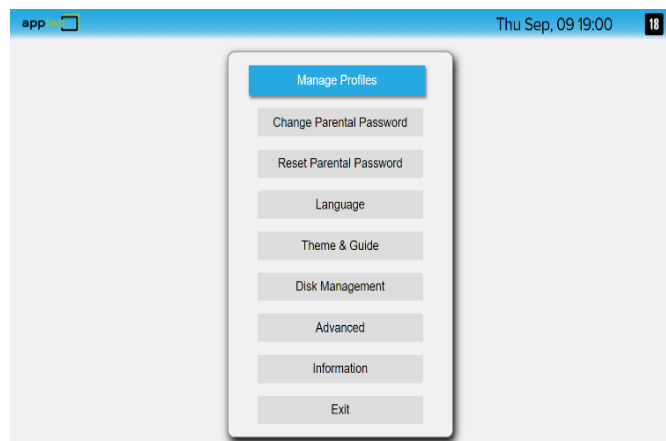


➤ Menu Bar

Access to different functionalities are at one remote controller click. The Menu Bar, fully customizable, can be open without leaving the program been watched.

➤ Settings

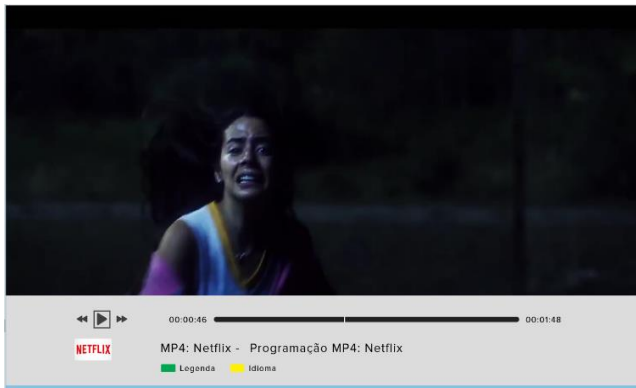
In the settings page you can configure every relevant aspect of the **WebUI**. For instance, selecting the **UI** language and Skin or managing profiles are done thru the settings page.



➤ Mini EPG

You do not have to leave the full screen video in order to check other channels programming. Mini EPG gives you the ability to navigate both horizontally (within the current channel) or vertically (among the other channels) and check the schedules programs, allowing you to set reminders and / or schedule

recordings. Zapping has never been so easy!

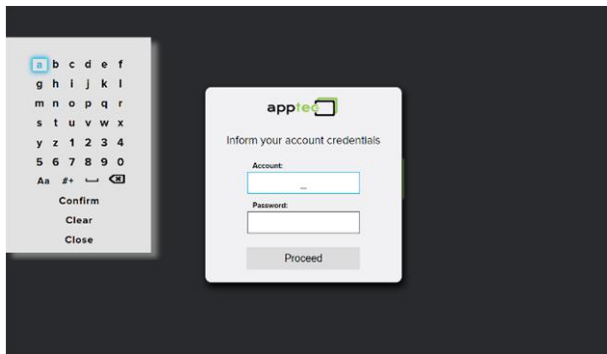


➤ Playback

Watch your recorded programs any time. The trick-play feature allows to pause, resume, advance, rewind, giving you an awesome experience. If the recorded program carries multiple audio tracks and or subtitles, you can select them using an intuitive and seamless interface.

➤ Customization and Localization

Due to its architecture, that utilizes CSS3 for visual attributes, styles such as colors, logos, splash screens, backgrounds, font family, font color, font size and much more can be easily changed to suit the needs of every project, allowing the creation of what is called as "Skins". The available Skins as well as the screen size and position can be changed on the fly. UI language can also be changed with few clicks.

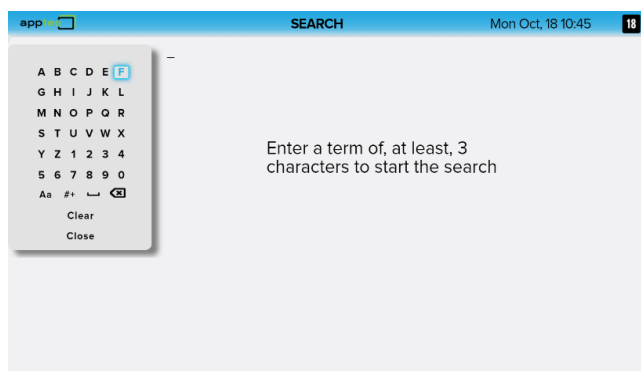


➤ Access Control

Access is granted only to registered customers and devices, allowing total control of what packages and lineups will be made available on a customer-by-customer basis.

➤ Search

Your customers will find an easy to use and intuitive interface when searching for their favorite movies, series, documentaries or any other content available in their lineup. Once found, they can schedule reminders and if PVR is available, schedule the recording of the event.



➤ DRM Support

WebUI uses the device native Player and, therefore, is very flexible as for what DRM is being used. In the case where different platforms are used, the operator can use a Multi-DRM server.

➤ Supported Devices

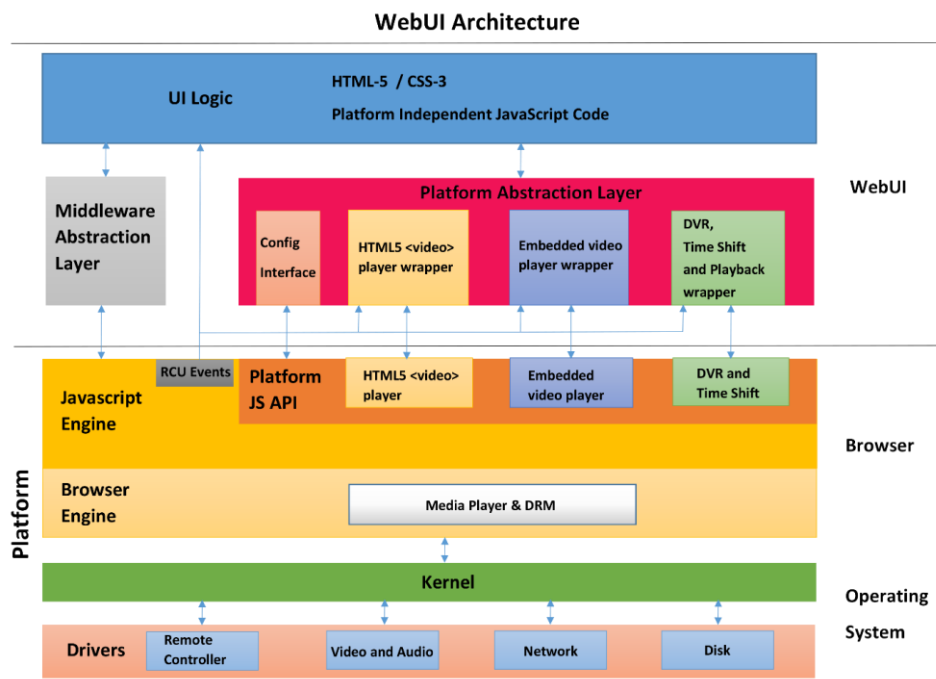
WebUI supports the following platforms, off-the-shelf:

- Linux STBs (Albis, Amino, EKT and Hybroad)
- Any Android TV and AOSP STBs
- Amazon Fire and Amazon Fire Stick
- Android, Tizen or webOS Smart TVs

➤ SDK

Apptec provides a SDK that the operator can use add support to any new platform.

The picture below shows **WebUI** architecture. The red rectangle is the Platform Abstraction Layer. This layer need to be coded for the specific set of APIs available in the platform. If several devices use the same set of APIs, then they share the same porting.



For further information and quotes, please, contact us.



Apptec Tecnologia Ltda.
São Paulo – SP – Brazil
e-mail: contact@apptecbr.com
Phone: +55 11 5041-9230
WhatsApp: +55 11 93088-5405